



City of NAPOLEON, OHIO

255 RIVERVIEW AVENUE — (419) 592-4010

February 26, 1979

Bergstedt Builders
1050 Dodd St.
Napoleon, OH 43545

Mayor

Robert G. Heft

Attn: Don Bergstedt

Clerk-Treasurer

Rupert W. Schweinhagen

Dear Mr. Bergstedt:

Members of Council

Vern Holers, President

Lawrence Haase

James Jackson

Marilyn Rausch

David Strobel

William Young

City Manager

Alan E. Tandy

Law Director

Keith Muehlfeld

The following are conditions for temporary occupancy to the second floor apartment at 1056 Dodd Street:

1. Install one approved smoke detector.
2. Door at top of stairs to second floor apartment to be 3/4 hr. Class "C" door only wired glass permitted in door.
3. Install approved heating system for apartment; unvented gas or kerosene heater will not be allowed.
4. Final electrical required in area to be occupied.
5. Install handrails on both sides of stairs.
6. Stairs to second floor to be enclosed with 1/2 hr. wall.

When these items are completed and approved, we will allow temporary occupancy.

In addition to these items, the following general items shall be attended to:

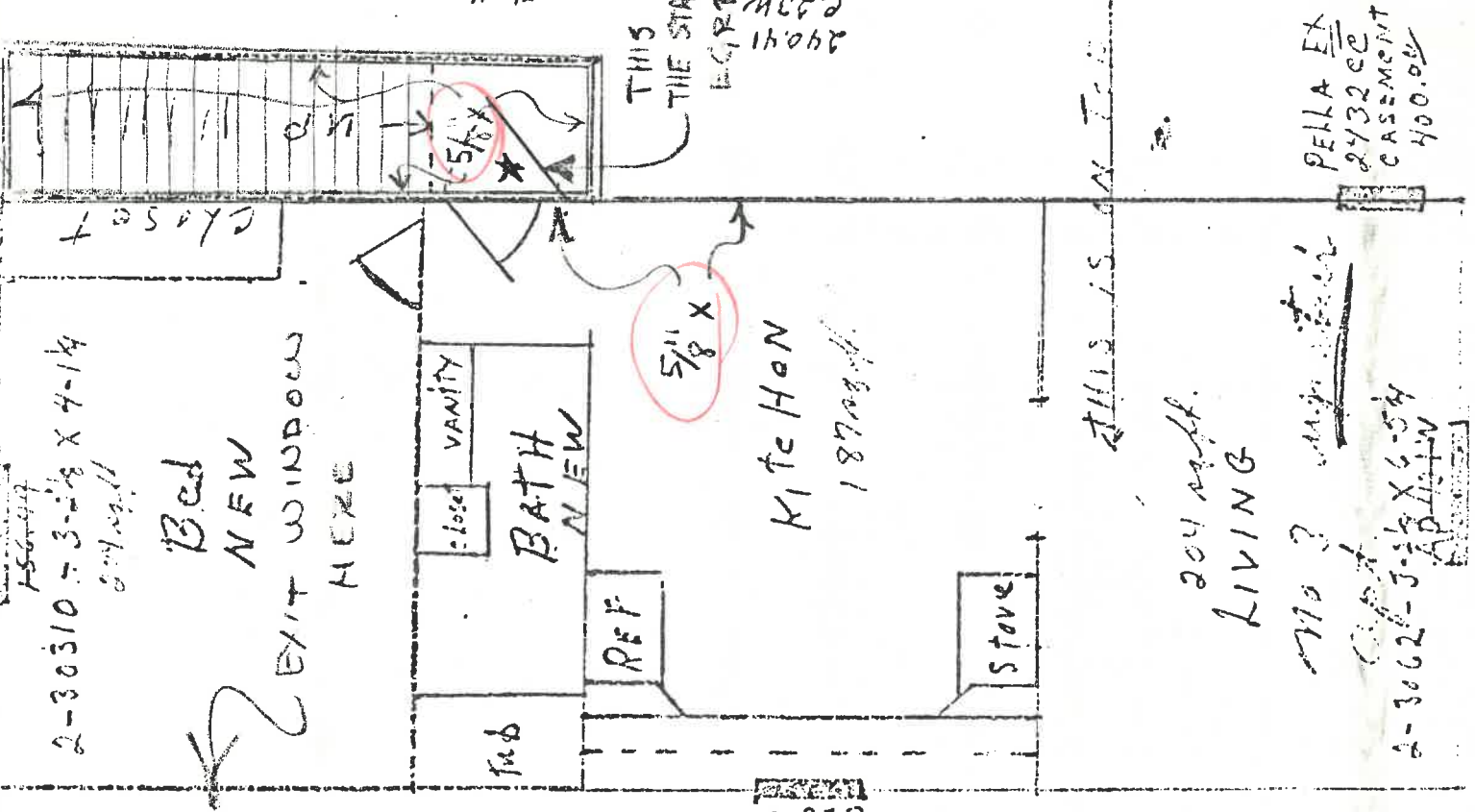
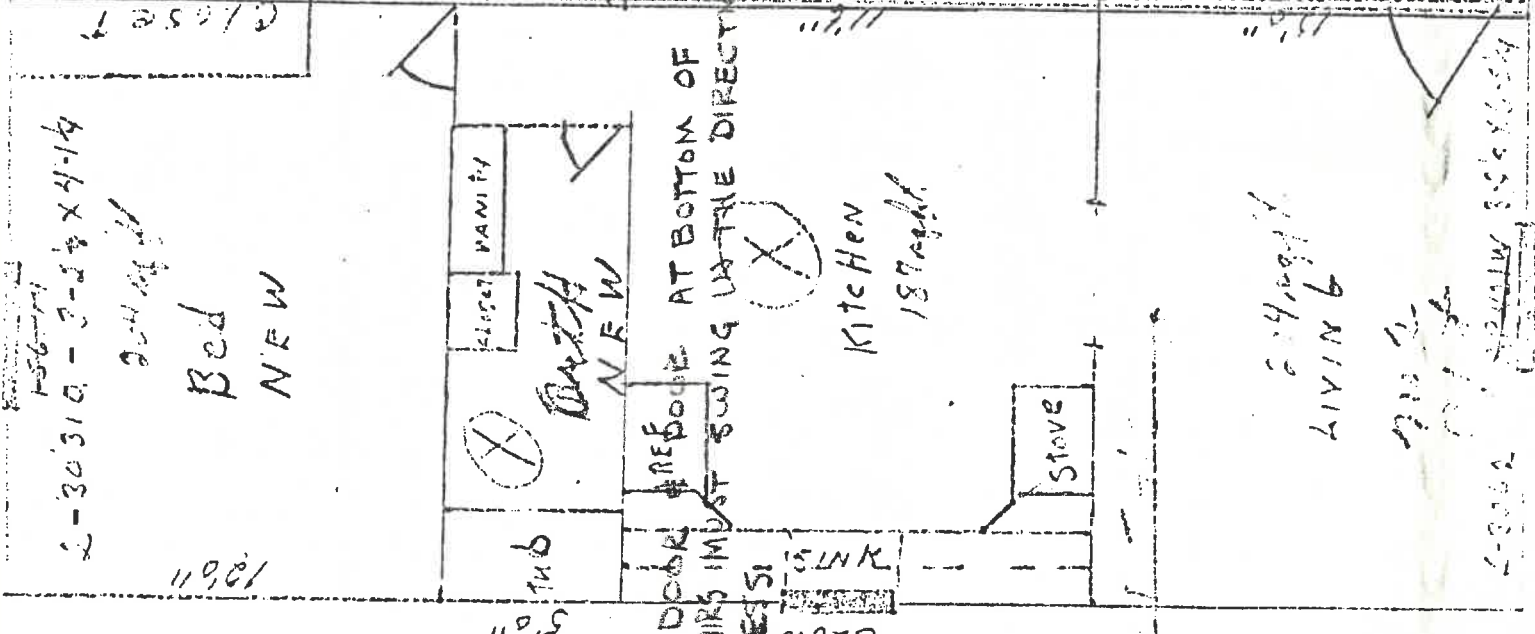
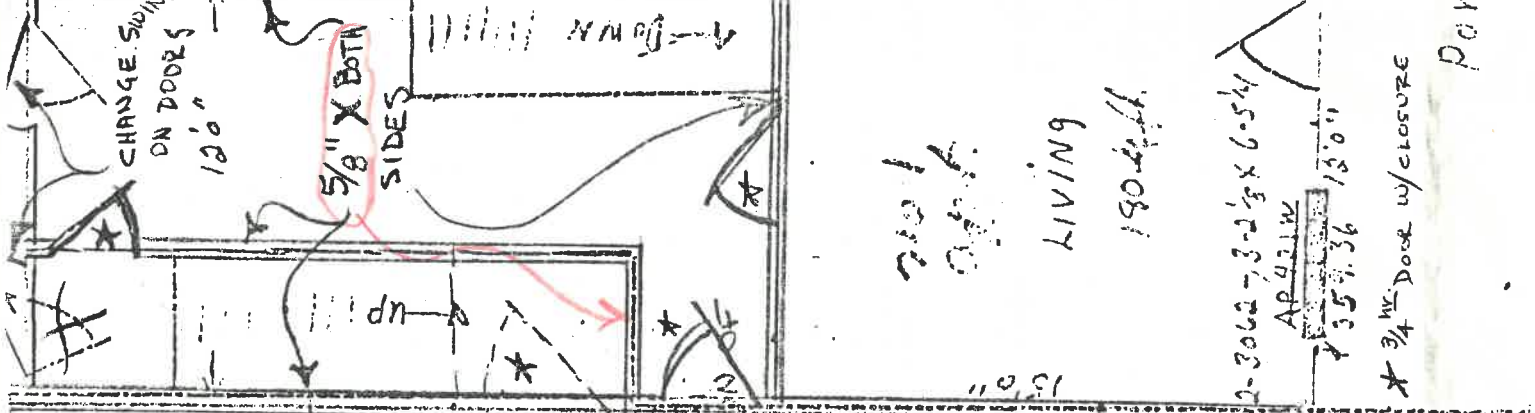
1. Install ~~NOT~~ more ~~2~~ supports in the crawl space area. *2 EQD*
2. Exterior door ~~NOT~~ First floor common entry to swing in direction of egress. *2 EQD*
3. Ceiling in common entry to be 5/8" Type "X" drywall.

Please call for inspection when these items are complete.

Sincerely,

Dept. of Building & Zoning

RDS:dd



BERNSTEIN BUILDERS, INC
 24041
 14041
 3/16 scale

2-30310 - 3-2 1/2 x 4-14
 204 sq ft
 Bed
 NEW

2-30310 - 3-2 1/2 x 4-14
 204 sq ft
 Bed
 NEW

Kitchen
 187 sq ft

Kitchen
 187 sq ft

LIVING
 190 sq ft

LIVING
 204 sq ft

LIVING
 204 sq ft

PELLA EX
 2432 CC
 CASEMENT
 400.00

2-3062 - 3-2 1/2 x 6-5 1/4
 APARTMENT
 187 sq ft

2-3062 - 3-2 1/2 x 6-5 1/4
 APARTMENT
 187 sq ft

3/4" Door w/ closure

THIS DOOR ARE DOOR AT BOTTOM OF THE STAIRS MUST SWING IN THE DIRECTION OF EGRESS

CHANGE SWING DN DOORS 120"

5/8" X BOTH SIDES

CLASSET

CLASSET

2-3062 - 3-2 1/2 x 6-5 1/4
 APARTMENT
 187 sq ft

2-3062 - 3-2 1/2 x 6-5 1/4
 APARTMENT
 187 sq ft

POY